

**Nokia Customer Care  
2115i/2116/2116i (RH-66)  
Mobile Terminals**

**Disassembly/Assembly**

<b>Contents</b>	<b>Page</b>
Safety Information .....	3
ESD Protection .....	3
Assembly Instructions .....	4
Disassembly Instructions.....	4
1. Remove the Battery Cover (B-cover) .....	4
2. Remove the A-cover and Keymat .....	4
3. Remove the Screws .....	5
4. Remove the PWB Assembly .....	6
5. Separate the UI from the PWB .....	6
6. Remove the Vibra, Microphone, and DC Jack .....	7
7. Remove the RUIM Label .....	7
8. Disconnect the PWB Shield .....	8
9. Remove the PIFA Antenna .....	8

## Safety Information

Adhere to the following guidelines when assembling and disassembling the mobile terminal.

- **QUALIFIED SERVICE**  
Only qualified personnel may install or repair mobile terminal equipment.
- **ACCESSORIES AND BATTERIES**  
Use only approved accessories and batteries. Do not connect incompatible products.
- **CONNECTING TO OTHER DEVICES**  
When connecting to any other device, read its user's guide for detailed safety instructions. Do not connect incompatible products.

## ESD Protection

Nokia requires that mobile terminal repair centers have sufficient ESD protection against static electricity when servicing mobile terminals. Use the following guidelines:



- A mobile terminal that is ready for use can be handled normally without ESD protection. The battery can be replaced in normal conditions of use.
- Use ESD protection when replacing a color cover, except for the mobile terminal covers which can be replaced by the customer.
- All electronic parts of the mobile terminal, including the display, are susceptible to ESD. Resistors also can be damaged by static electricity discharge.
- All ESD-sensitive parts must be packed in metallized protective bags during shipping and handling outside any ESD Protected Area (EPA).
- Every repair action involving opening the mobile terminal or handling the mobile terminal components must be done under ESD protection.
- ESD-protected spare part packages **MUST NOT** be opened/closed outside an EPA.

For more detailed information about ESD protection and EPAs, contact your local Nokia Customer Care representative.

## Assembly Instructions

To assemble the mobile terminal, follow the "Disassembly Instructions" in reverse order.

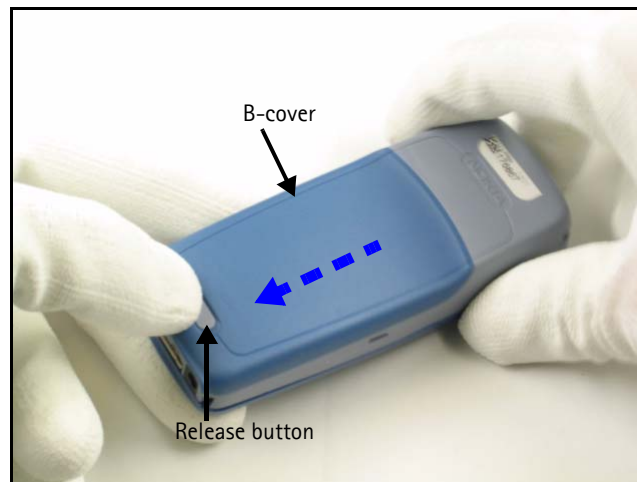
## Disassembly Instructions

Use the following steps to disassemble the mobile terminal.

### 1. Remove the Battery Cover (B-cover)

A. Turn the mobile terminal off.

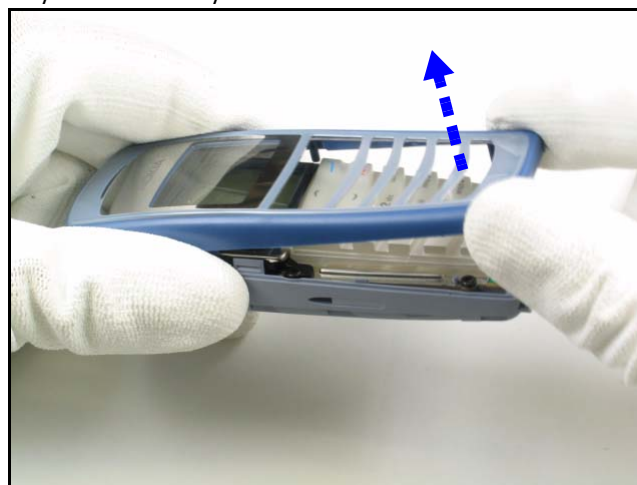
B. Push down on the release button, and slide the B-cover away from the mobile terminal.



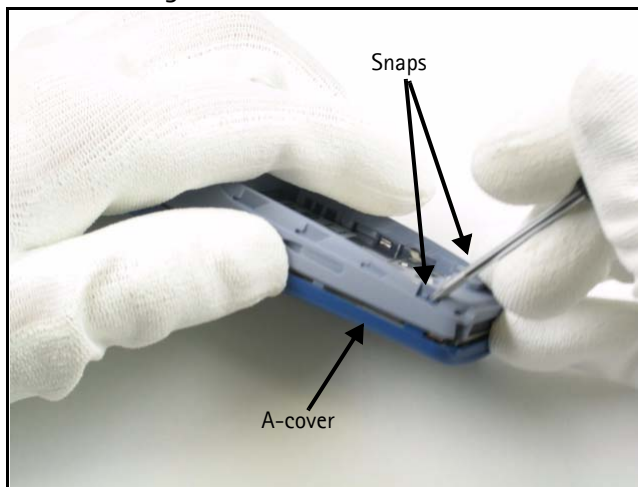
C. Remove the battery.

### 2. Remove the A-cover and Keymat

Hold the assembly and carefully lift the bottom end of the A-cover from the D-cover.

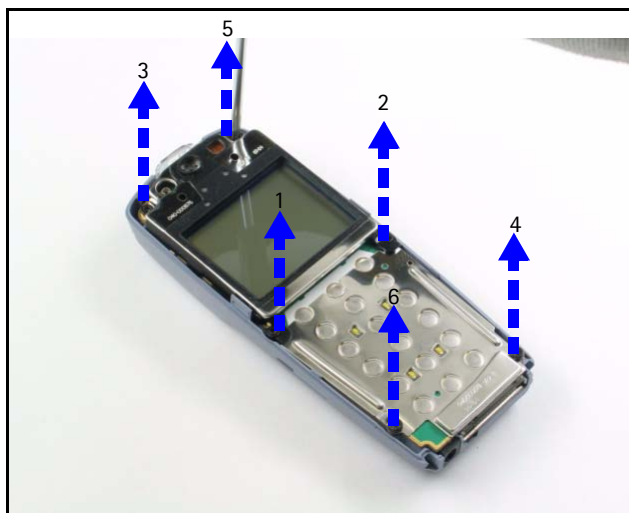


If necessary, apply pressure with a screwdriver to unlock the snaps on each side that lock the A-cover and D-cover together.



### 3. Remove the Screws

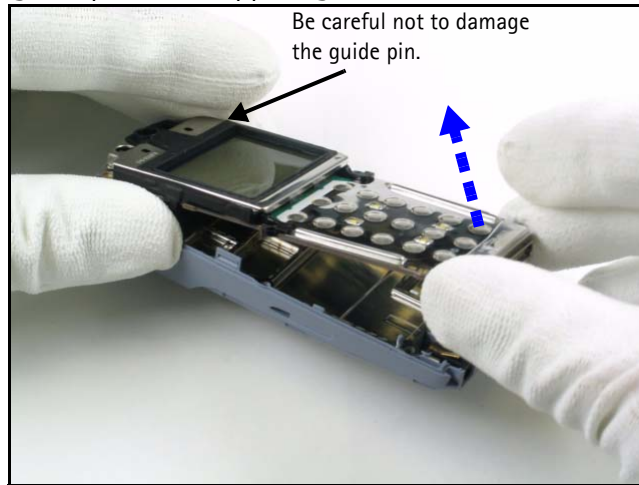
Use a screwdriver to remove the six screws in the order shown.



*Note: During assembly, use the reverse order and use a torque driver with a torque of 25 Ncm.*

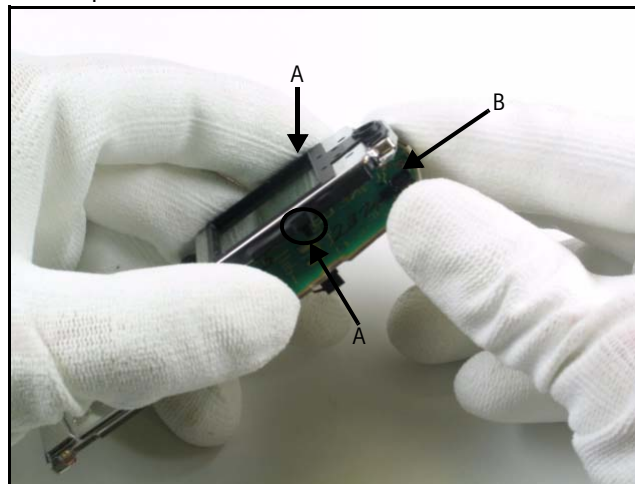
#### 4. Remove the PWB Assembly

Starting at the bottom end, carefully lift the PWB assembly off the D-cover. Be sure not to damage the guide pin in the upper right corner of the D-cover.



#### 5. Separate the UI from the PWB

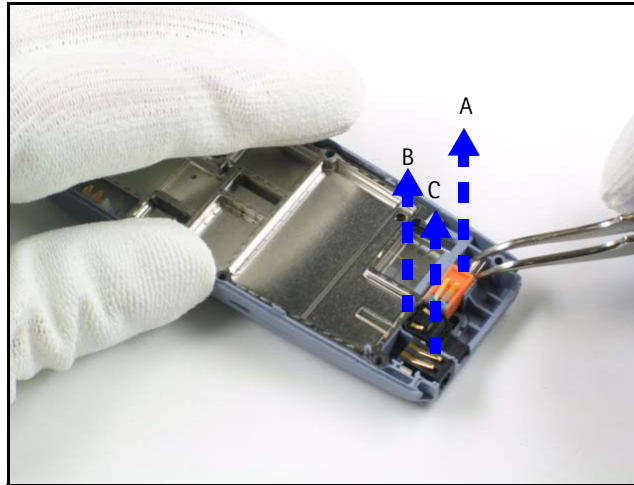
A. Unhook the UI clasps that attach it to each side of the PWB on each side.



B. Carefully unattach the UI from the PWB.

**6. Remove the Vibra, Microphone, and DC Jack**

Use a tweezers to carefully remove the vibra (A), microphone (B), and DC jack (C) from the D-cover.



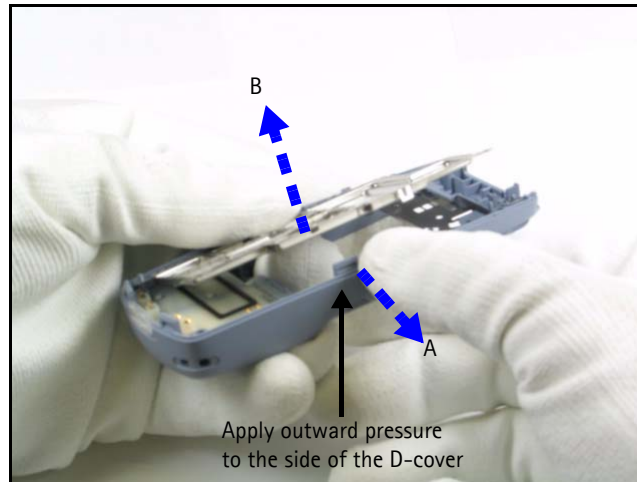
**7. Remove the RUIIM Label**

Disconnect the RUIIM label from the PWB shield. (Tweezers are optional.)



## 8. Disconnect the PWB Shield

(A) Apply outward pressure to a side of the D-cover while (B) pushing up on the PWB shield to remove it from the assembly.



## 9. Remove the PIFA Antenna

Pry the top half of the PIFA antenna away from the D-cover and remove it with your fingers.

